



HERO

IRIS

NOX

MAYA

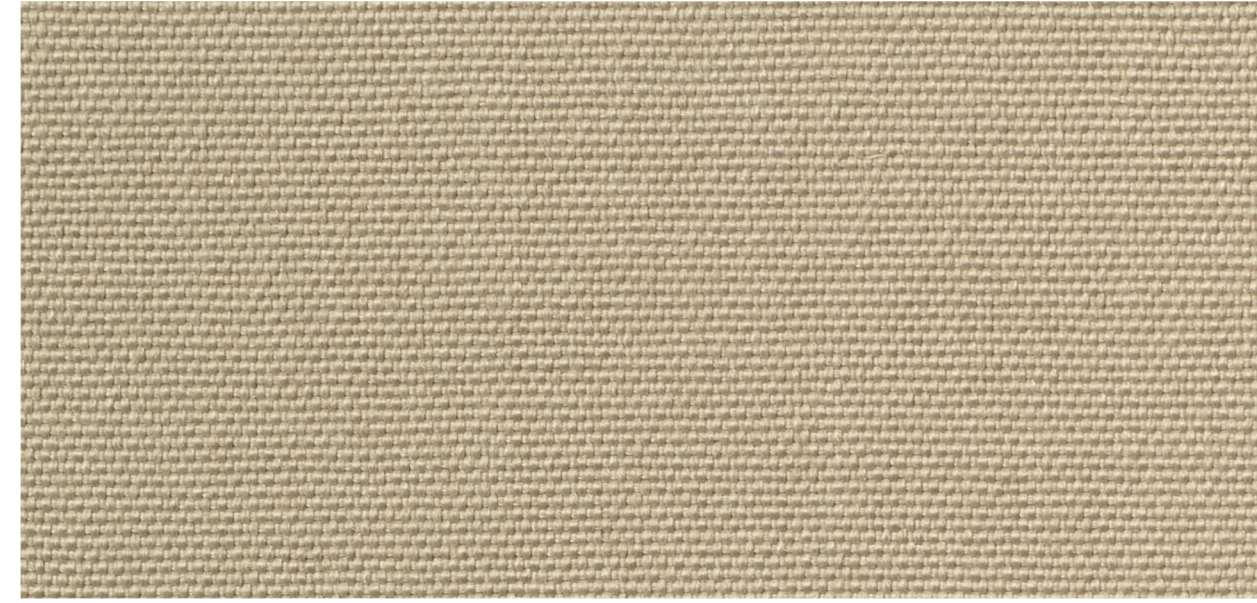


# REVIVA CLASSIC COLLECTION

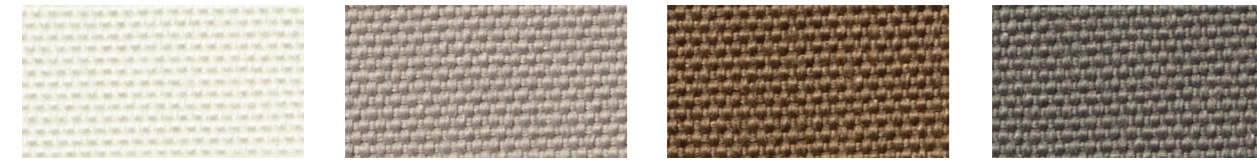
*OUTDOOR - INDOOR*



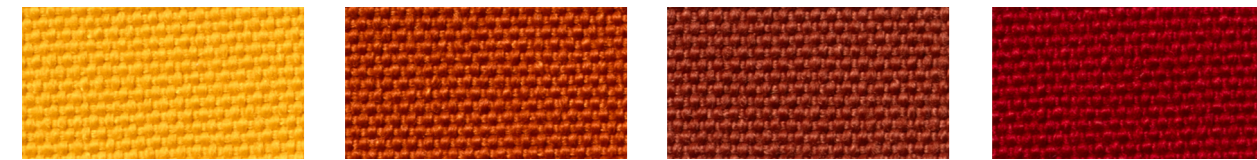
HERO



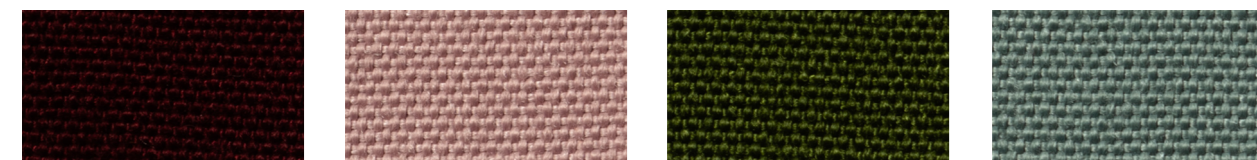
401



111 601 402 602



501 307 304 305



303 901 801 711

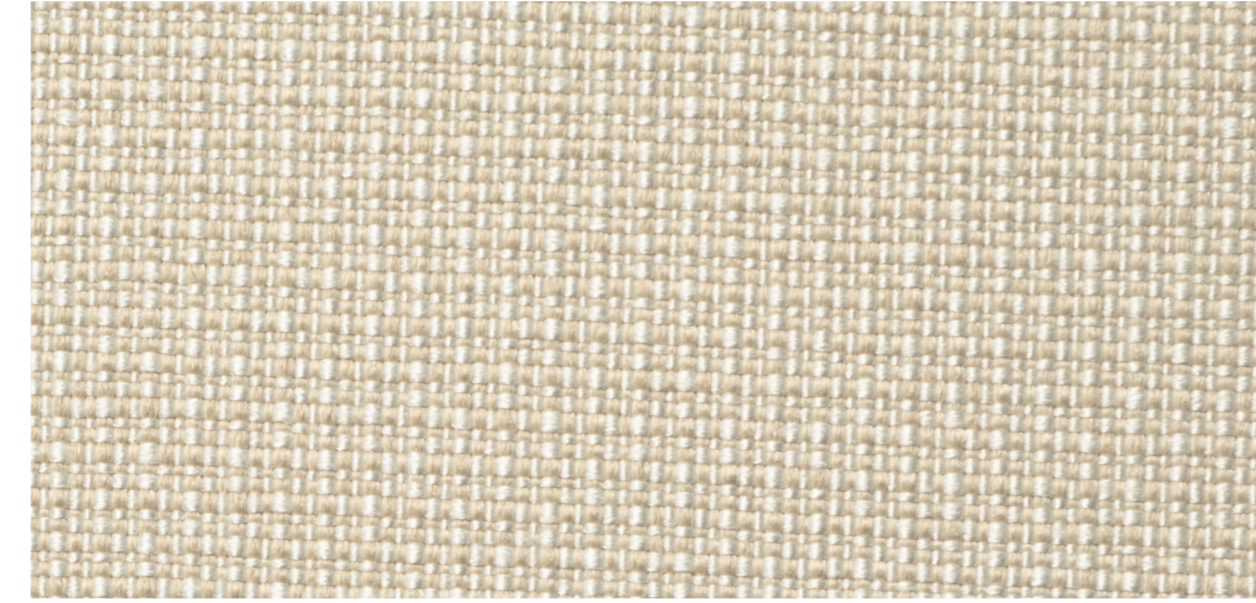


701 706 705 610

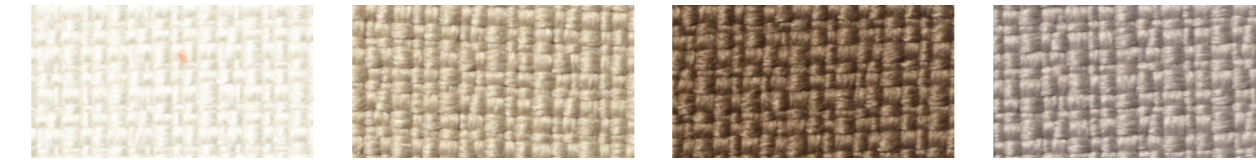


200

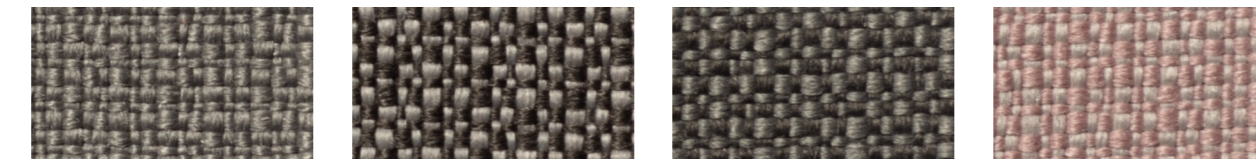
IRIS



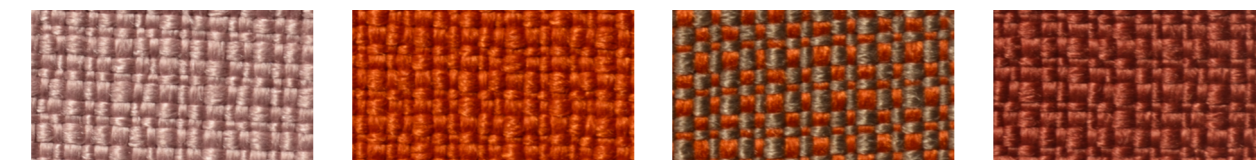
403



111 401 402 601

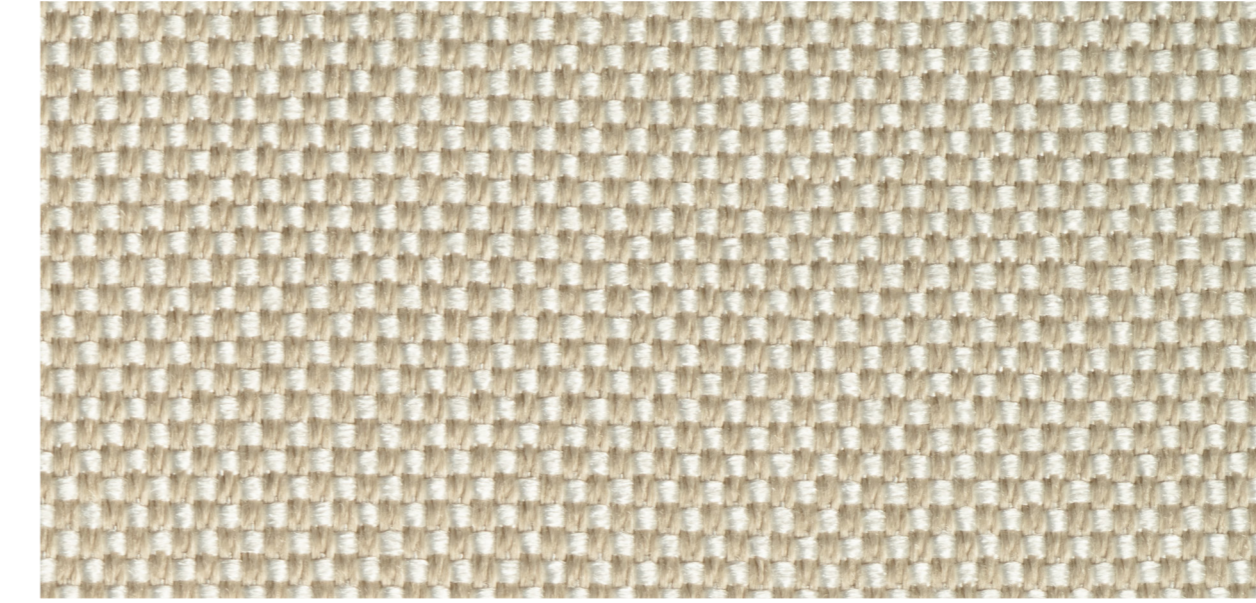


602 603 604 607

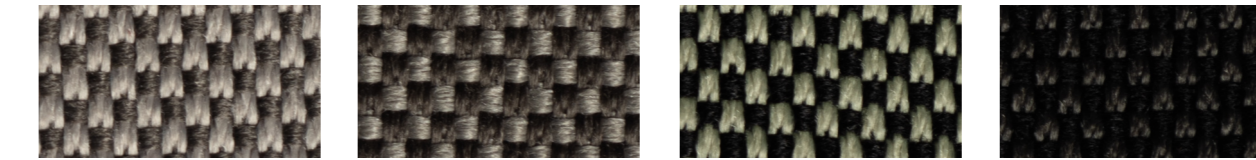


901 307 404 304

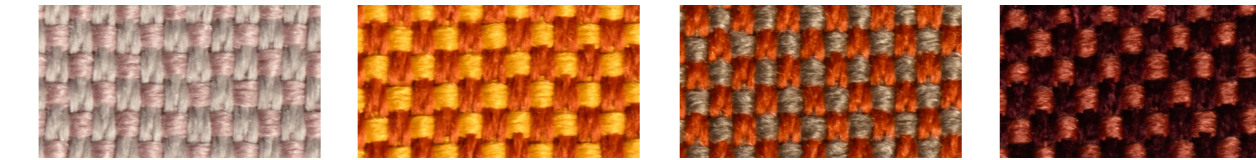
NOX



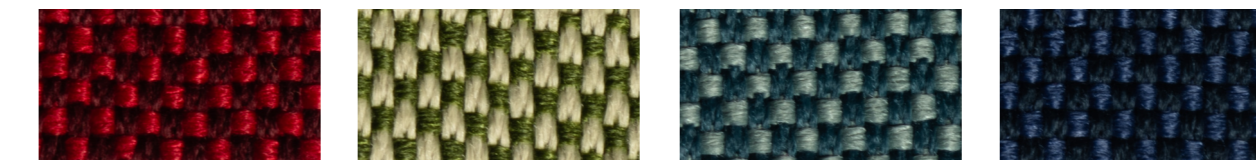
403



603 604 406 605

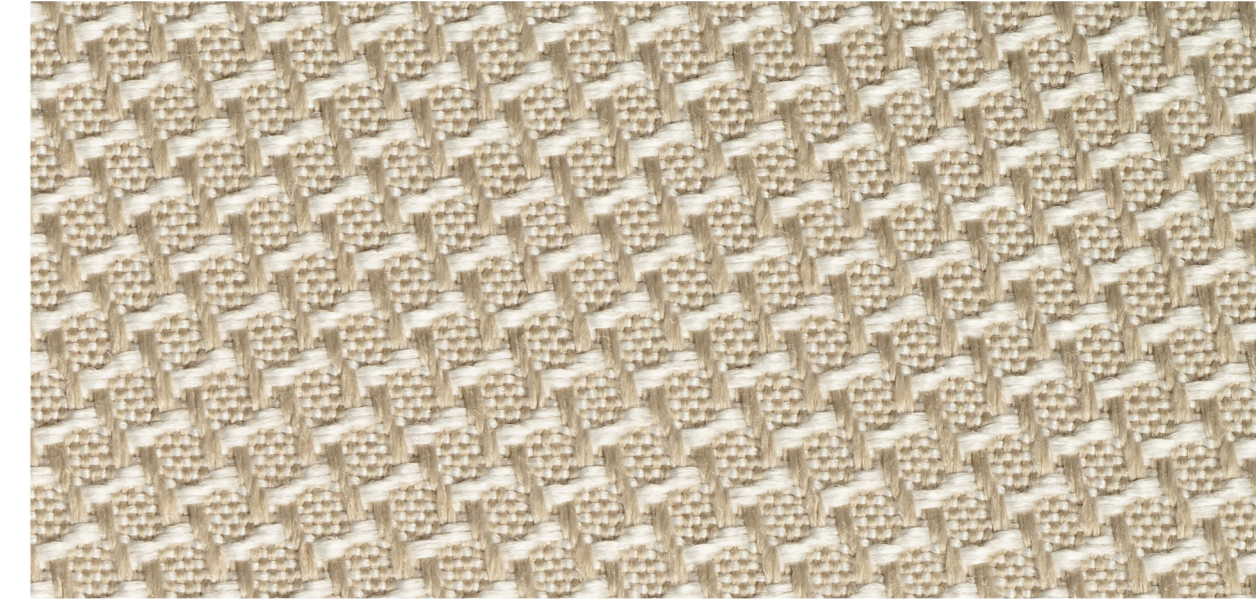


607 308 404 302

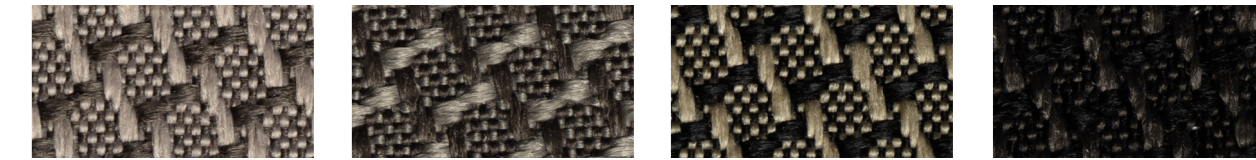


306 802 703 707

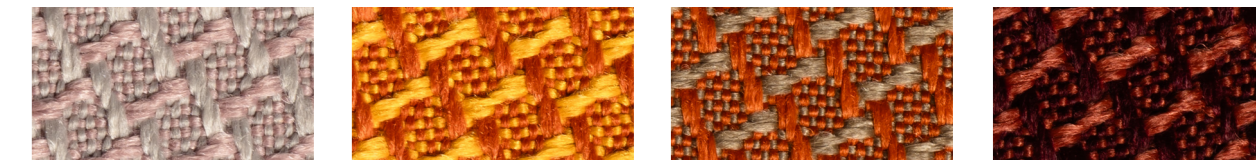
MAYA



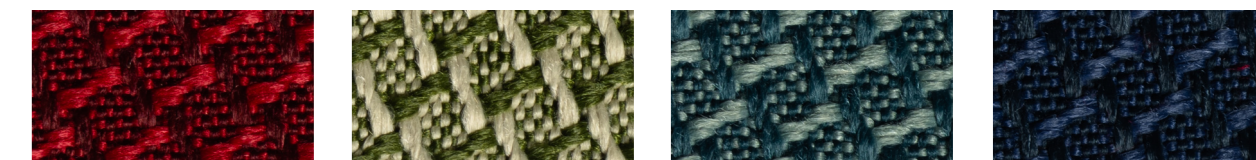
403



603 604 406 605

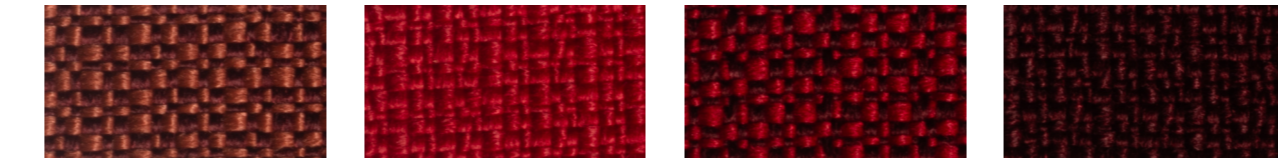


607 308 404 302

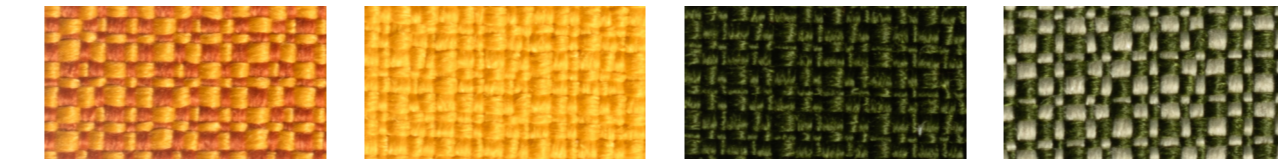


306 802 703 707

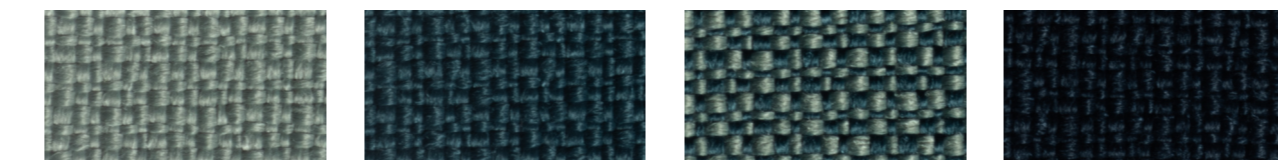
FROM PLASTIC TO TEXTILE



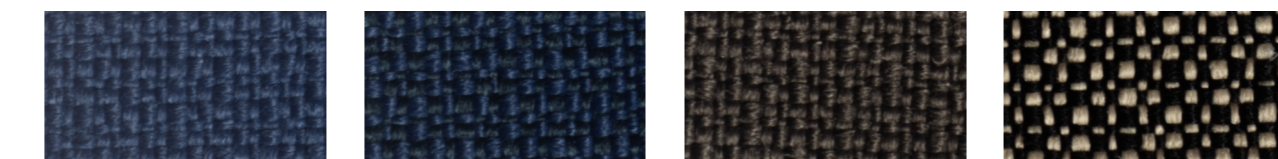
302 305 306 303



308 501 801 802



711 701 703 706




705 707 610 406




605 200

# SCHEDA TECNICA - *Technical data sheet*

## HERO - NOX - MAYA

COMPOSIZIONE /Composition	100% PET (recyc.)
ALTEZZA MINIMA GARANTITA / Minimum guaranteed width	140 cm
PESO / Weight	585 ± 5% g/m
SOLIDITÀ COLORE ALLA LUCE / Colour fastness to light ISO 105-B02	7
SOLIDITÀ COLORE ALLO SFREGAMENTO / Colour fastness to rubbing ISO 105-X12	SECCO / dry 4/5 - UMIDO / wet 4
RESISTENZA DEL COLORE AL SUDORE / To sweat EN ISO 105-B04	ACIDO + ALCAMO 5
SOLIDITÀ DEL COLORE AI SOLVENTI ORGANICI / To organic solvent EN ISO 105-X05	4 - 5
RESISTENZA AL CALORE Ad-hoc protocol (7 days, 105°C)	4
RESISTENZA ALLE MACCHIE / To stains	
Crema solare 5 / Repellente insetti 5 / Caffè 4-5 / Vino rosso 5 / Coca cola 5 / Birra rossa 5 / Olio di oliva 5 / Alcool denaturato 5 / - Acqua 5	
CALO AL LAVAGGIO IN LAVATRICE /Shrinkage to machine washing EN ISO 6330	TRAMA / width ± 0% - ORDITO / lenght ± 0%
SCORRIMENTO DEI FILI SULLE CUCITURE / Seam slippage EN ISO 13936-2	TRAMA / width 4 mm - ORDITO / lenght ± 4 mm
RESISTENZA ALLA FORMAZIONE DI PILLING / Pilling - Test ISO 12945-2 (Martindale)	4
RES. ALL'ABRASIONE (END POINT) / Abrasion resistance - Test ISO 12947 - 2 (Martindale)	50.000 cicli/cycles
ISTRUZIONI DI LAVAGGIO / Washing Instructions	
NON CENTRIFUGARE / Do not centrifuge	

## IRIS

COMPOSIZIONE /Composition	100% PET (recyc.)
ALTEZZA MINIMA GARANTITA / Minimum guaranteed width	140 cm
PESO / Weight	800 ± 5% g/m
SOLIDITÀ COLORE ALLA LUCE / Colour fastness to light ISO 105-B02	7
SOLIDITÀ COLORE ALLO SFREGAMENTO / Colour fastness to rubbing ISO 105-X12	SECCO / dry 4/5 - UMIDO / wet 4
RESISTENZA DEL COLORE AL SUDORE / To sweat EN ISO 105-B04	5
SOLIDITÀ DEL COLORE AI SOLVENTI ORGANICI / To organic solvent EN ISO 105-X05	4 - 5
RESISTENZA AL CALORE Ad-hoc protocol (7 days, 105°C)	4
RESISTENZA ALLE MACCHIE / To stains	
Crema solare 5 / Repellente insetti 5 / Caffè 4-5 / Vino rosso 5 / Coca cola 5 / Birra rossa 5 / Olio di oliva 5 / Alcool denaturato 5 / - Acqua 5	
CALO AL LAVAGGIO IN LAVATRICE /Shrinkage to machine washing EN ISO 6330	TRAMA / width ± 0% - ORDITO / lenght ± 0%
SCORRIMENTO DEI FILI SULLE CUCITURE / Seam slippage EN ISO 13936-2	TRAMA / width 2 mm - ORDITO / lenght ± 3 mm
RESISTENZA ALLA FORMAZIONE DI PILLING / Pilling - Test ISO 12945-2 (Martindale)	4/5
RES. ALL'ABRASIONE (END POINT) / Abrasion resistance - Test ISO 12947 - 2 (Martindale)	100.000 cicli/cycles
RESISTENZA ALLA LACERAZIONE / Tear strenght - EN ISO 13937-3	TRAMA / width 695 - ORDITO / lenght 450
RESISTENZA ALLA TRAZIONE / Tensile strenght - EN ISO 13934-1	TRAMA / width 1318 N - ORDITO / lenght 1452 N
ALLUNGAMENTO ALLA ROTTURA / Maximun elongation - EN ISO 13934-1	TRAMA / width 24,18% - ORDITO / lenght 4,15%
ISTRUZIONI DI LAVAGGIO / Washing Instructions	
NON CENTRIFUGARE / Do not centrifuge	

### REAZIONE AL FUOCO Reaction to fire

Classe 1 IM - UNI 9175 (gomma/foam FR 35 kg/m3)  
EN 1021-1+2 (gomma/foam FR 35 kg/m3)  
BS5852-2006 cig.+flame (gomma/foam FR 35 kg/m3)  
HERO M1

CALIFORNIA TEST - TB117 - AB2998  
Infiammabilità all'interno dei veicoli - FMVSS 302  
IMO FTP-8 Res. A652 (gomma/foam FR 35 kg/m3)